



# Garden Club of Madison

## PALETTES to PETALS



## KATZ COLLECTION REIMAGINED

OCTOBER 17-19, 2024



In 2023 Madison residents Penny and Allan Katz donated 43 pieces of original art from their extensive private collection to the E.C. Scranton Memorial Library. The Katzes are art and antique collectors and dealers with a focus on 19th and early 20th century American Folk Art. Their collections have been featured in many publications including two major articles in *Architectural Digest*. Allan was a former trustee and Board member of the American Folk Art Museum in New York City. For the past twenty-one years, Allan has been an appraiser on the PBS show *Antiques Roadshow*. In making the donation, both spoke to their deep partnership with the Library and their mutual desire to increase access to significant works of art.

The donated Collection includes artworks by artists from around the globe, showcasing a diverse range of styles including realism, expressionism, abstraction and minimalism. Highlighting the richness of artistic expression, the Collection encompasses various mediums such as painting, photography, collage and mixed media.

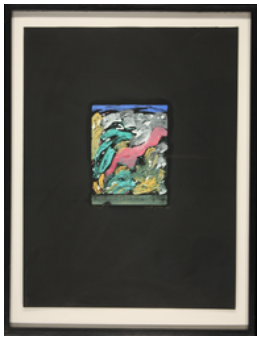
## The Palette Pathway

The best way to view the eleven artworks with their floral design is a walking tour following the palette pathway: colorful floor decals of palettes and petals with arrows to direct you. This handout also includes written instructions set out in italics. None of our displays will be found in the Children's Room, near the library reference computers or in any offices.

Can you guess which piece in the collection is Allan Katz's favorite?

*To begin your tour, navigate past the main desk to the Boston Post Road entrance and into the café. Floral Design 1 is located to the left of Elevator A.*

**Nanette Carter** - Passage #16, 1988



1

**Floral Design by Barbara Rosenblum**

*At the top of the stairs, or exiting the elevator on the mezzanine floor, take a left into the rotunda to view Floral Design 2 on the left-hand wall.*

**Alice Dalton Brown** - Patrick's Porch



2

**Floral Design by Jacinta Rafferty**

*From the rotunda, walk back towards the main staircase and look to the right into the hallway to find Floral Design 3 & 4.*

**Larry Horowitz** - Untitled and Main Pond Reflection, 1988



3

4

**Floral Designs by Lois Nichols**

*Continue to the main staircase, and from the landing, look to the left for a view of Floral Design 5. You will view this design again when you are on the first floor.*

**Dona Nelson** - Quiet Night, 1981



5

**Floral Design by Colleen Cummings,  
Michele Moran and Denise Rose**

*Proceed to the top of the staircase, turn left, walk past the teen area on your right and into the North Conference Room.*

**Charles Ross** - Starship Nightlight Sun Center by Earth



6

**Brendan Neiland** - Cumulus, 1992



7

**Floral Design by Carolyn Bernard**

*Exit the North Conference Room, turn right and proceed down the hallway toward the window seating area facing Wall Street.*

**Aaron Fink** - Pear, 1992



8

**Floral Design by Donna Lenkeit**

*As you face Wall Street, Floral Design 9 will be on your left.*

**James Coignard** - Signification Colorée



9

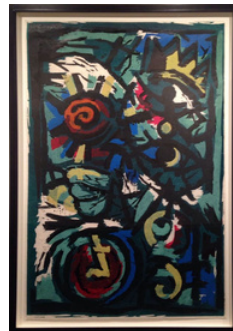
**Floral Design by Marleen Pacelli**

*Head back down the main staircase (or take the elevator opposite the main staircase) and proceed to the first floor. Walk towards the Wall Street side of the building.*

*On your left, you'll have a second opportunity to view Floral Design 5 and Quiet Night, 1981 (shhh, Allan Katz's favorite).*

*Continue toward the windows overlooking the street to view Floral Designs 10 & 11.*

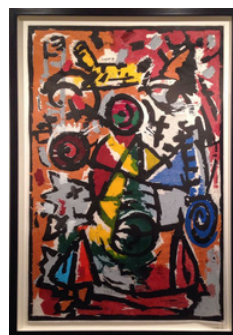
**Charles Hewitt** - Spruce, 1989



10

**Floral Design by Barbara Rosenblum**

**Charles Hewitt** - Tom-Tom, 1988



11

**Floral Design by Dotty Budnick & Nan Sutherland**

*Walk back to the parking lot entrance where you began the walking tour. Please return your handout.*

*Thank you for visiting our show!*



# Garden Club of Madison

## CO-PRESIDENTS' MESSAGE

Welcome to a celebration of the Garden Club of Madison's 100th Anniversary!

The Club is culminating its year of Centennial events with two unique exhibits:

**The Garden Club of Madison—100 Years!** This historical retrospective showcases our remarkable legacy and present projects...imagine planting 20,000 daffodils! Join us in exploring how we can all protect and enhance the future together. On display until November 20, 2024.

**Palettes to Petals: Katz Collection Reimagined**, a floral exhibit heralding the Club's long tradition of floral design.

Palettes to Petals: Katz Collection Reimagined matches selected artworks of the Scranton Library Art Collection, donated by Madison residents, Penny and Allan Katz, with floral designs that "reimagine" these pieces in a three-dimensional floral interpretation. Enjoy the walking tour through the delightful ambience of our Town's beautiful library, featuring eleven floral interpretations created by members of the Garden Club of Madison. We extend special thanks to Penny and Allan Katz for their enthusiastic support and "artful inspiration" for our designers.

We also wish to thank Allison Murphy, Director of the Scranton Library; Kari Castelli, Business Manager; Emily Rush, Head of Reference; Tim Kellogg, Head of Public Services and the Scranton Library staff. Their cooperation, suggestions and support have made this vibrant initiative a reality.

Finally, we are grateful to the many members of the Garden Club of Madison who have been involved in planning and organizing these exhibits. We thank the Design Steering Committee, the Designers and the Docents for a wonderful show!

To learn more about the Garden Club of Madison's mission and past contributions to our community, kindly visit the Garden Club of Madison website, [gcmct.org](http://gcmct.org).

Best regards,

**Sue Kelley, Co-President**

**Marleen Pacelli, Co-President**

### Steering Committee

Lois Nichols  
Dotty Budnick  
Marleen Pacelli  
Nan Sutherland

### Graphic Design

Ben Munro

### Floral Designers

Carolyn Bernard  
Dotty Budnick  
Colleen Cummings  
Donna Lenkeit  
Michele Moran  
Lois Nichols

Marleen Pacelli  
Jacinta Rafferty  
Denise Rose  
Barbara Rosenblum  
Nan Sutherland

### Docents

Carole Angelino  
Inger Connery  
Liz Duffy  
Gail Grossman  
Antonio Jibilian  
Joan Powers  
Marion Rizzo  
Lauraine Ryan



*Scan the code to be taken to a digital copy of this handout*